

PAMEC

CONCRETE PUMPING & PLACING SYSTEMS

BV 08 TR MINI-BOOM

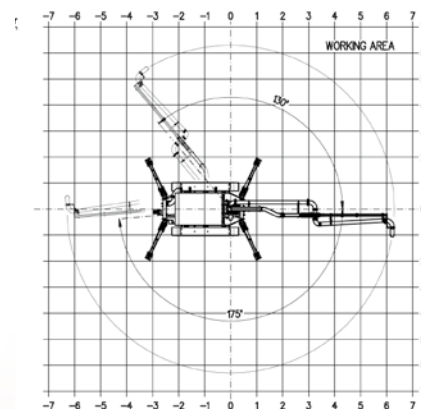
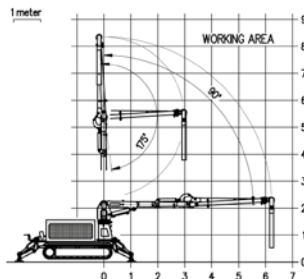
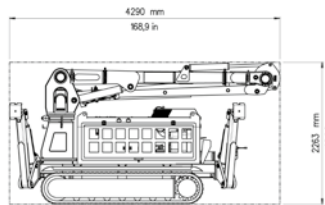
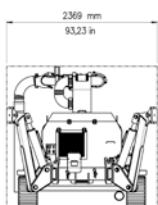
FULLY POWERED CONCRETE PLACEMENT BOOM



www.pamec.com

PAMEC

CONCRETE PUMPING & PLACING SYSTEMS



BV 08 TR

Type	Code No.	Piping		R		Weight			
		D.N.				Boom only		Concrete	
		mm	in.	M	ft	Kg	Lbs	KG	Lbs
BV 08 TR - 45M	73 0 78 70 1 45 9	100/127	4,1/2"	8	26,24	4.340	9.568	250	551
BV 08 TR - 55M	73 0 78 70 1 55 9	125/148	5,1/2"	8	26,24	4.400	9.700	385	849

The boom is equipped with a 31 hp gasoline engine. Always use 87 octane gasoline minimum.
The boom is radio remote control operated.
By request, we can also supply an additional wired control to be used in case of emergency.

Other versions on request.



PAMEC S.R.L.

Z.I. PUNTA PENNA • 66054 VASTO (CH) - Italy

Tel.: +39-0873-310.000 • Fax: +39-0873-311.787

info@pamec.com • www.pamec.com

Copyright PAMEC S.r.l. 2011. All right reserved.

For more information
CALL

+39-0873-310.000